

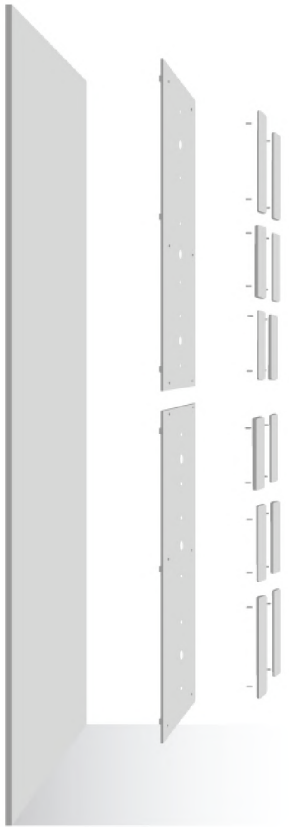
# Blooki.

**2021**  
**DESIGN**  
**PATENTED**  
**Blooki.**

Product catalogue 2021



# Blooki.



Easy to mount module wall panels  
with a lighting system controlled  
by remote.

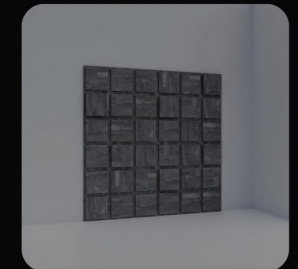
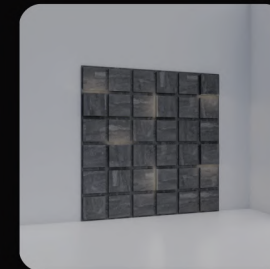
## Configure the light as you wish



## Choose as many as you need



## Change the brightness of the light



## Why Blooki?



Functionality



Design



Easy assembling



Reasonable price



Quality



Lighting system  
controlled by remote.



# Blooki.

Unique solution confirmed by reserved  
design patent.

## Important information:

- Dimensions of 1 module 78 cm x 117 cm
- 1 module consists of a base board and six panels
- 1 of 6 panels includes light
- Setting up is based on connecting modules with each other
- Modules may be connected vertically and horizontally
- Assembling is based on setting up a base panel to the wall and after that clipping each panel designated places.
- Cables are carried out between the base panel and the wall
- After assembling the modules, connect the lighting ends to the controller at the floor, connect to electricity and it's ready to go!

Average time of assembling the wall of dimensions 1.56 meter x 2.34 meter, which corresponds to 4 modules, takes app. 2 hours.

# 8 Decors to choose



## Usage of Blooki in the **house**

- Wall behind the headboard in bedroom
- Living Room
- TV wall
- Wardrobe
- Home office
- Hallway

## Use of Blooki in **business**

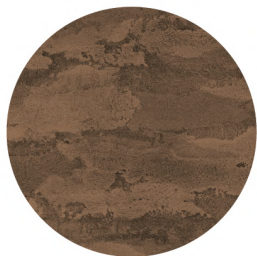
- Office
- Hotel
- Shop
- Apartment
- Restaurant
- Reception
- Coffee house







**RUSTY**



**BRIGHT  
CONCRETE**







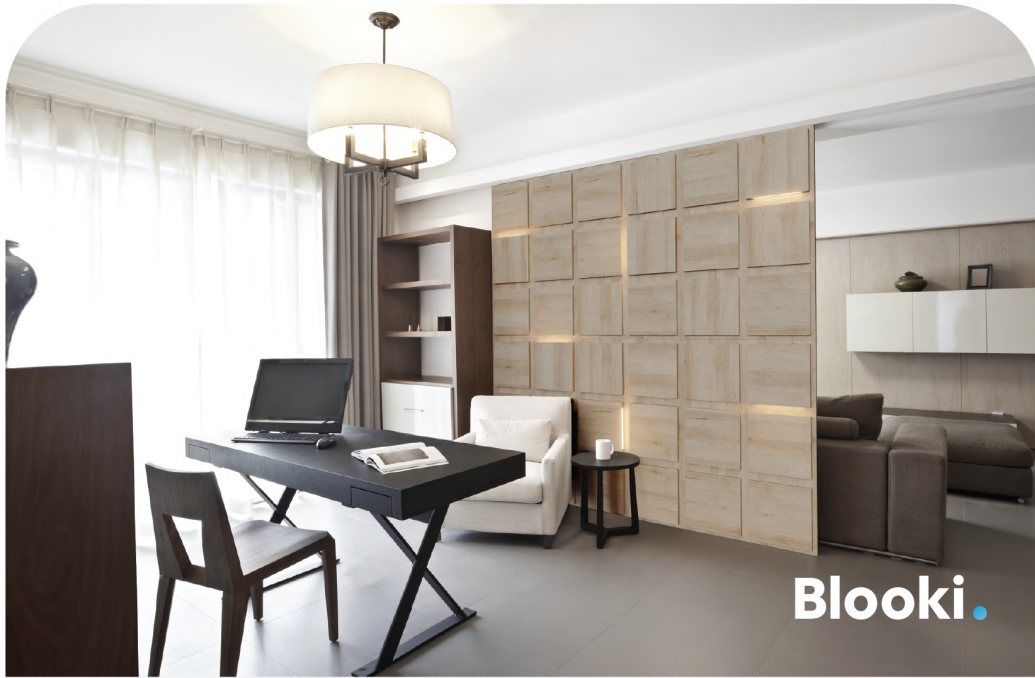
**NATURAL  
CONCRETE**



**DARK  
CONCRETE**







**Blooki.**



**Blooki.**



**SEA  
OAK**



**CASSIC  
VINTAGE**







**NATURAL  
OAK**



**NOBLE  
OAK**





**Blooki.**